

EasyOne Pro

Pulmonary Function Laboratory

FVC test:	
FVC	MEF25 (FEF75)
FEV1	MEF50 (FEF50)
FEV3	MEF75 (FEF25)
FEV6	MEF25-75 (FEF25-75)
FEV1 / FVC	PEF**
FEV1 / FEV6	FET
FEV1 / VC	
FEV1var	
FEV6var	
FEVCvar	

FVL test (add. to FVC):	
FVC	
PIF	
MIF25 (FIF75)	
MIF50 (FIF50)	
MIF75 (FIF25)	

SVC test:	
VCmax	
VCin	
VCex	
IC	
ERV	
IRV	
VT	
RF	

MVV test:	
MVV	
BPM	

DLCO test:	
DLCO	
DLCO Adj	
VA	
DL/VA	
IVC	
BHT	
TLCsb	
FRCsb	
RVsb	

Technical Specifications

Dimensions/Weight

Dimension: 20H x 24W x 20D cm
Weight: < 8 kg

Flow/Volume Measurement

Accuracy: volume: $\pm 2\%$ or 0.050 l
flow: $\pm 2\%$ or 0.020 l/s
Resolution: volume: > 1ml
flow: 4 ml/s
Range: volume: ± 12 l
flow: ± 16 l/s
Resistance: < 1.5 cm H₂O/l/s @ 12 l/s

Oxygen Analyzer

Type: solid state electrolyte
Range: 0 – 100 Vol%
Accuracy: < 0.1 Vol%
Resolution: < 0.01 Vol%
Stability: < 0.1% / 10 hr

Helium Analyzer

Type: molar mass
Range: 0 – 50% He
Accuracy: < 0.1% He
Resolution: 0.02% He

Carbon Monoxide Analyzer

Type: solid state electrolyte
Range: 0 – 0.33%
Accuracy: $\pm 0.003\%$
Resolution: 0.001%

Mouth Pressure Transducer

Range: ± 300 cmH₂O
Accuracy: $\pm 1\%$

Electrical

Voltage: 100 VAC to 240 VAC
Frequency: 50/60 Hz
Power: max. 50 W

System Features

Languages: English, others on request
Printout: direct USB to printer
Data Transfer: printer, modem, memory stick, email, ethernet/LAN
Display: color touch-screen

Environmental Conditions

Operating Temperature: 5 – 40 °C
Operating Humidity: 15 – 95% non-condensing
Storage Temperature: -20 – 50 °C
Storage Humidity: 5 – 95% non-condensing

Standards (Pending)

Quality System: ISO 9001/ISO 13485
FDA: 510(k) market clearance
MDD 93/42/EEC: CE marked
Electrical Safety: EN 60601-1
EMC: EN 60601-1-2

Barometric Pressure Transducer

Range: 300 – 800 mmHg
Accuracy: ± 3 mmHg

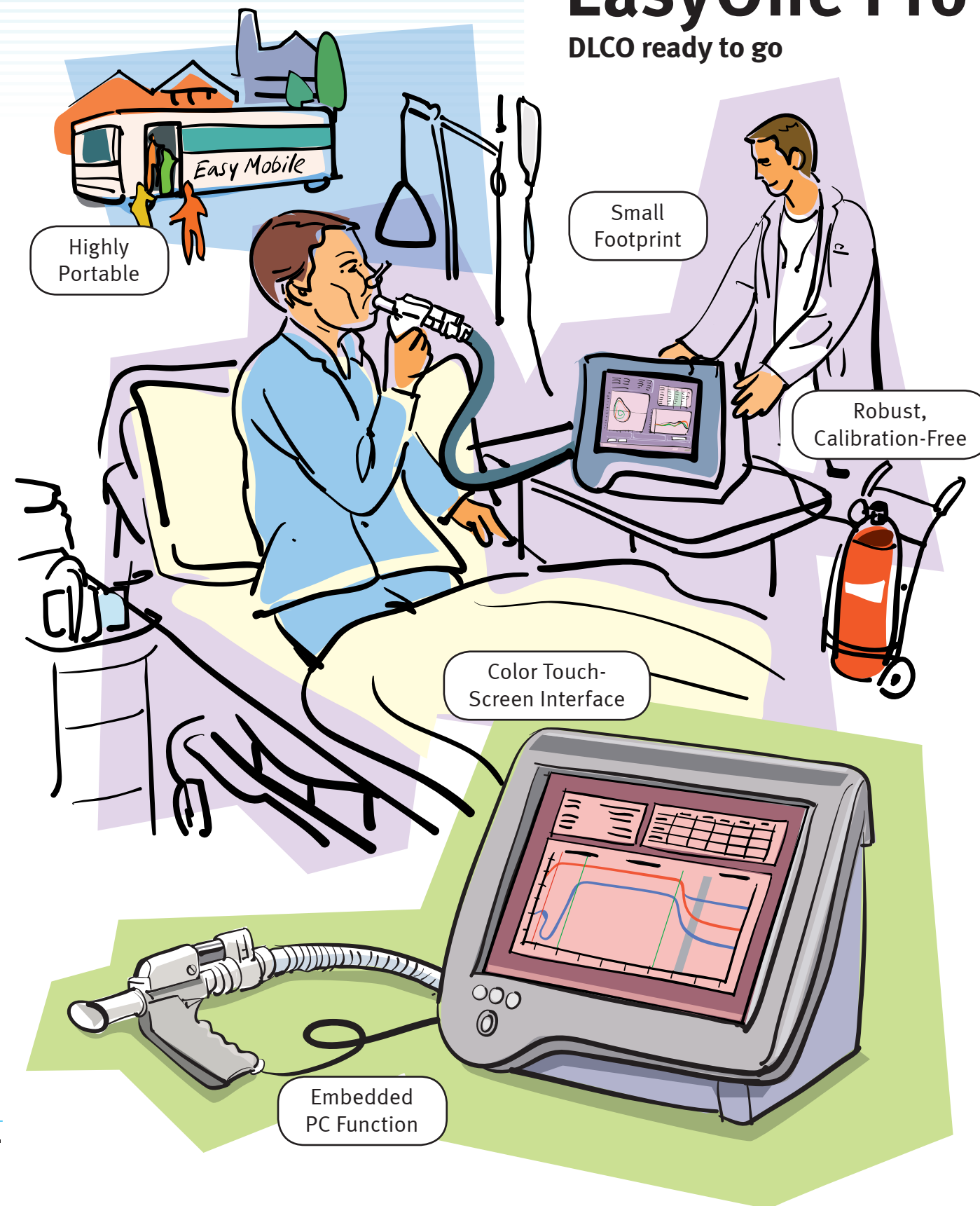
Temperature Sensor

Range: 0 – 40 °C
Accuracy: ± 1 C



EasyOne Pro

DLCO ready to go



COLL
HEALTH AND SAFETY INC.

15 - 145 Traders Blvd. East
Mississauga, ON L4Z 3L3
p: 905 625 3994 f: 905 625 6684
t: 1.800.267.9317 e: bruce@collhealth.com
w: www.collhealth.com



ndd Medizintechnik AG
Technoparkstrasse 1
CH-8005 Zürich
www.ndd.ch

TrueFlow
makes the difference

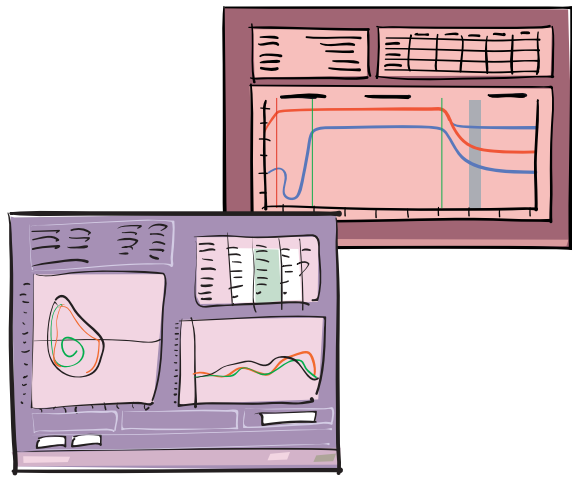
MolMass
the next step

UPG
the new dimension

TrueFlow
makes the difference

MolMass
the next step

UPG
the new dimension



Comprehensive Pulmonary Testing Capabilities

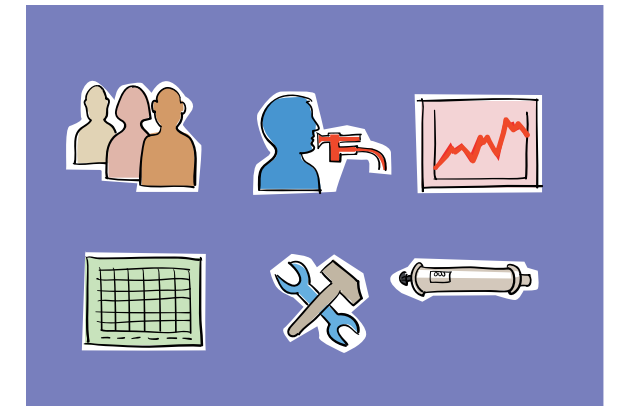
- complete spirometry (Pre/Post, FVC, FVL, tidal breathing)
- single breath diffusion capacity (DLCO)
- static lung volumes (SVC)
- maximal voluntary ventilation
- lung volume determination, single breath (RV, TLC)
- biologic and simulator control trending
- bronchial challenge testing
- UPG

Windows XP Embedded Performance

- extensive USB support
 - printer, keyboard, mouse
- integrated network function
 - data storage, EMR capability
- Windows security standard
 - protected desktop
 - HIPPA, 21 CFR Part 11
 - 100% data and preference backup

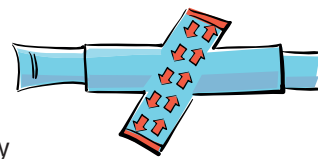
Easy Color Touch Operation

- 13 inch TFT
- 1024 x 768 resolution
- 180 degree view angle



Light Weight Patient Interface

- state of the art sensor/flow assembly
- proven ultrasonic flow measurement
- exhaled gas analysis
- exclusive carbon monoxide sensor technology
- ultra-fast oxygen sensor



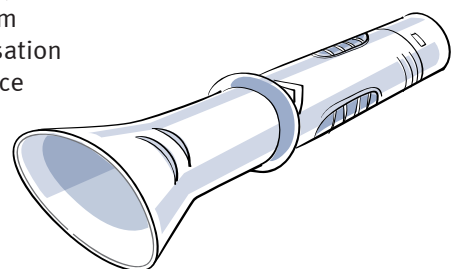
Fully Compatible with EasyOne Spirometer

- over 20'000 sold worldwide



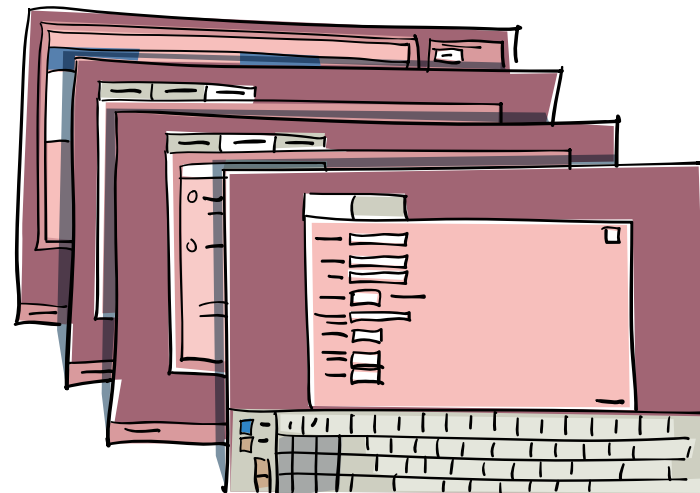
100% Hygienic Patient Interface

- world-wide proven SPIRETTE
- open system
- no condensation
- no resistance



User Defined Software Interface and Reporting

- flexible software layout
- real-time QA messaging
- simple, intuitive for patient and operator
 - letter grade feedback (A, B, C, D, F) compliant with current ATS/ERS standards
- multiple reporting formats
 - ASCII, XML, ATS/ERS, MS Access, PDF



One Gas Only Operation

(10% He, 0.3% Co, 21% O₂ in N₂)



Low Cost per Test

- instant ON, no warmup required
- calibration free sensors
 - simply QA cal check
- no maintenance
- no down time